

Waterplex® Industrial Volume Filters



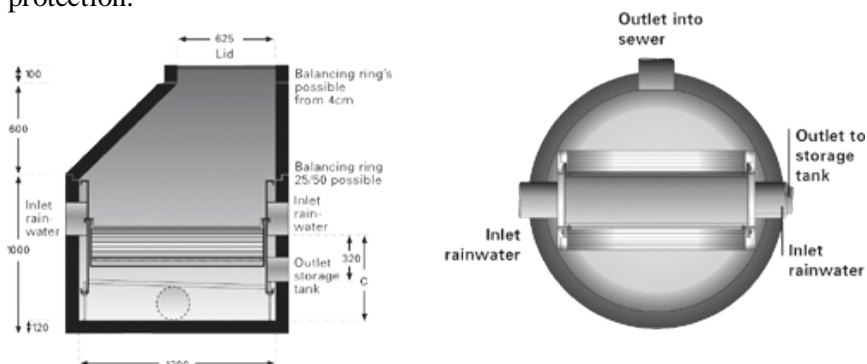
The Industrial Volume Filters are designed for filtering harvested rainwater in large catchment, high flow installations. These unique filters provide a centralised filtration solution for whole of roof filtration for areas of up to 500m².

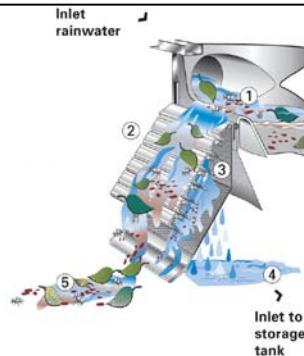
The Industrial Volume Filter range is an ideal solution for primary filtration because:

- It is made from drinking quality grade materials (polyethylene and stainless steel)
- It can filter up to 2,350m² of roof area
- It can be located out of sight under in the sub-floor area
- It is a closed system
- Rubbish is removed to storm water by the residual water that runs over the top of the filter
- It connects to standard PVC pipes

The Volume Filter provides a two step cleaning system:

1. The first stainless cascading “ladder” provides immediate coarse filtration to remove larger leaves and debris.
2. The second, finer mesh sieve (0.55mm) removes smaller debris and provides mosquito protection.

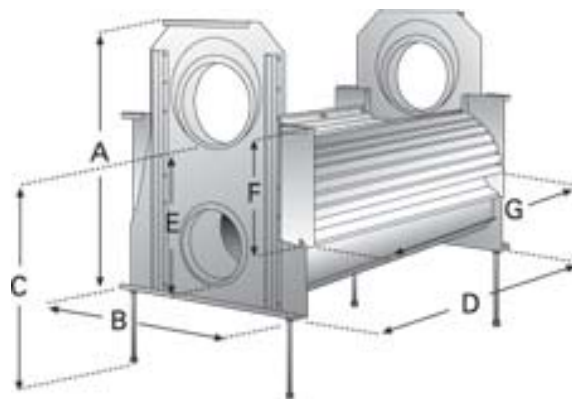




The Industrial Volume Filter Process

1. Harvested rainwater and debris enters the filter and fills the recess to enable water to distribute evenly over the cascading filter.
 2. Coarse debris is pushed over the stainless cascade and removed to storm water.
 3. Finer debris is then captured on the secondary filter mesh and also pushed to storm water by the residual water passing over the first coarse mesh filter.
 4. Filtered water is then directed to the **Waterplex®** storage system
 5. Residual water and debris is washed to storm water.
- The filter should be cleaned on a regular basis. The frequency of cleaning depends on the rain catchment environment.

Industrial Volume Filter Dimensions & Recommended Prices



Filter	Inlet Rain-water	Outlet to sewer	Outlet to storage tank	A in mm	B in mm	C in mm	D in mm	E in mm	F in mm	G in mm	min. Ø inspect chmbr	Capacity Ltrs per sec thruflow	Capacity Ltrs per sec to storage	Roof Capacity m ²
VF2	1 x DN200	1 x DN200	1 x DN150	670	540	525	390	325	275	320	1000	20	3.0	850
VF3*	2 x ** DN200	1 x DN200	1 x DN150	670	540	525	980	325	275	880	1200	30	4.5	1,100
VF4	2 x ** DN250	1 x DN250	1 x DN150	670	540	575	980	325	275	880	1200	60	9.0	1,700
VF6	2 x ** DN250	1 x DN250	1 x DN200	670	540	575	980	325	275	880	1200	60	9.0	2,350

* VF3 has a filter unit only on one side.

** You don't need to use both inlets but filter capacity will be higher.